

So nimm denn meine Hände

Tuba und Orgel

T: Julie Hausmann 1862

M: Friedrich Silcher 1842

Arr.: Franz Zaunschirm

Tuba

Orgel

8' + 4'

Measures 1-2 of the musical score. The Tuba part is in the bass clef with a 4/4 time signature, showing rests. The Organ part is in treble and bass clefs, with a 4/4 time signature and a '8' + 4'' label above the first measure. The key signature has one flat (B-flat).

3

Measures 3-5 of the musical score. The Tuba part is in the bass clef with a 4/4 time signature, showing rests. The Organ part is in treble and bass clefs, with a 4/4 time signature. The key signature has one flat (B-flat).

6

Measures 6-8 of the musical score. The Tuba part is in the bass clef with a 4/4 time signature, showing notes. The Organ part is in treble and bass clefs, with a 4/4 time signature. The key signature has one flat (B-flat).

2
9

Measures 2 and 9 of a musical score. The score is written for three staves: a single bass staff at the top and a grand staff (treble and bass) below. The key signature has one flat (B-flat). Measure 2 shows a bass line with a half note G2, a quarter note A2, and a half note B2. The grand staff features a continuous eighth-note accompaniment in the treble and a bass line with a half note G2, a quarter note A2, and a half note B2. Measure 9 shows a bass line with a half note G2, a quarter note A2, and a half note B2. The grand staff features a continuous eighth-note accompaniment in the treble and a bass line with a half note G2, a quarter note A2, and a half note B2.

12

Measure 12 of a musical score. The score is written for three staves: a single bass staff at the top and a grand staff (treble and bass) below. The key signature has one flat (B-flat). Measure 12 shows a bass line with a half note G2, a quarter note A2, and a half note B2. The grand staff features a continuous eighth-note accompaniment in the treble and a bass line with a half note G2, a quarter note A2, and a half note B2.

15

Measure 15 of a musical score. The score is written for three staves: a single bass staff at the top and a grand staff (treble and bass) below. The key signature has one flat (B-flat). Measure 15 shows a bass line with a half note G2, a quarter note A2, and a half note B2. The grand staff features a continuous eighth-note accompaniment in the treble and a bass line with a half note G2, a quarter note A2, and a half note B2.

18

Measure 18 of a musical score. The score is written for three staves: a single bass staff at the top and a grand staff (treble and bass) below. The key signature has one flat (B-flat). Measure 18 shows a bass line with a half note G2, a quarter note A2, and a half note B2. The grand staff features a continuous eighth-note accompaniment in the treble and a bass line with a half note G2, a quarter note A2, and a half note B2.

Tuba

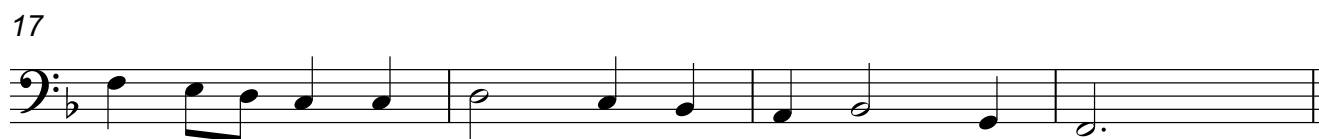
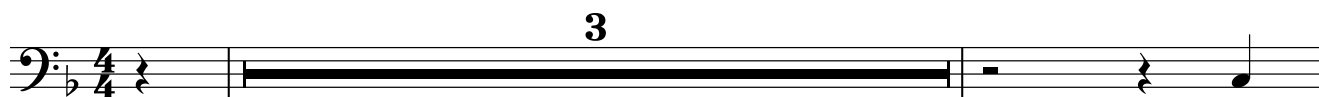
So nimm denn meine Hände

Tuba und Orgel

T: Julie Hausmann 1862

M: Friedrich Silcher 1842

Arr.: Franz Zaunschirm



Orgel

So nimm denn meine Hände

Tuba und Orgel

T: Julie Hausmann 1862

M: Friedrich Silcher 1842

Arr.: Franz Zaunschirm

