

COULD YOU NOT WATCH

for SATB choir, soloist, congregation† and organ,
with optional oboe* and strings

Matthew 26:40-42, 50 and Luke 23:28
Paraphrased by H.H.H.

Music by
HAL H. HOPSON (ASCAP)

Moderately slow, with warmth and pathos (♩ = ca. 84)
INTRODUCTION

OBOE

SOPRANO
ALTO

TENOR
BASS

ORGAN
Man. *mp*
Ped.

5

5

5

† Congregational part may be found on page 14.
* Oboe part may be found on page 12.

9 REFRAIN: *Choir only*

9 *mp*

Could you not watch? Could you not watch? Could you not watch with me one hour?

mp

9

(*mp*)

13 *rit.*

13 *rit.*

Could you not watch? Could you not watch? Could you not watch with me?

13 *rit.*

17 REFRAIN: Choir & Congregation (the Congregation may sing in unison or four-part harmony)

mp a tempo

17 (*mp*) *a tempo*

Could you not watch? Could you not watch? Could you not watch with me one hour?

(*mp*)

a tempo

21

rit.

21

rit.

Could you not watch? Could you not watch? Could you not watch with me?

21

rit.

VERSE 1: Soloist

25 *a tempo*

p 25 *a tempo*

1. The spir - it is__ will - ing, but the flesh is__ weak. I

25 *a tempo*

p

Man.

29 *rit.*

29 *rit.*

soon must drink the__ bit-ter cup, the cup of the world's sal - va - tion.

29 *rit.*

33 REFRAIN: Choir & Congregation

mp a tempo

33 *mp a tempo*

Could you not watch? Could you not watch? Could you not watch with me one hour?

mp

Ped.

37

rit.

37 *rit.*

Could you not watch? Could you not watch? Could you not watch with me?

37 *rit.*

VERSE 2: Soloist

41 *a tempo*

41 *p a tempo*

2. O Fa - ther, for - give them, for they know not what they do. The

41 I (Accomp.) *a tempo*

p II (Solo)

Ped.

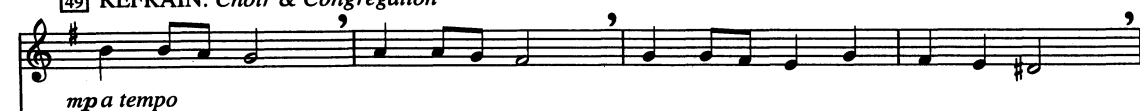
45 *rit.*

45 *rit.*

hour is at hand;— with swords they come to take me.

45 *rit.*

49 REFRAIN: Choir & Congregation



49 *mp a tempo*



Could you not watch? Could you not watch? Could you not watch with me one hour?

mp



49 *a tempo*



53

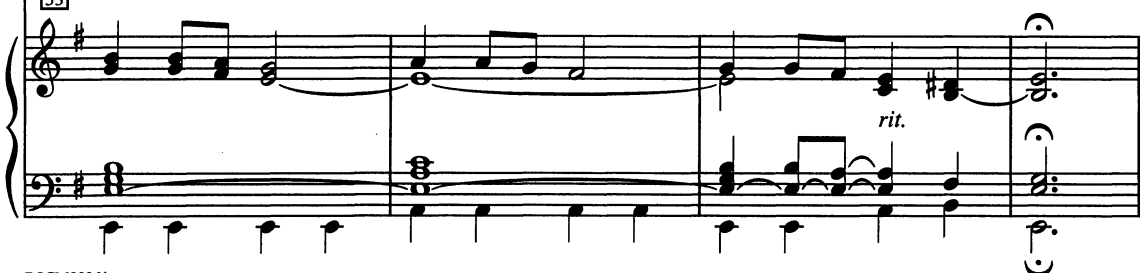


53



Could you not watch? Could you not watch? Could you not watch with me?

53



VERSE 3: Soloist

57 *a tempo* *p*

57 *p a tempo*

3. Je - ru - sa-lem weep_ not, weep not for your-selves, but

57 *a tempo* *p*

61 *rit.*

61 *rit.*

weep for your chil - dren, yes, weep for your chil - dren's chil - dren.

61 *rit.*

65 REFRAIN: Choir & Congregation

mp a tempo

65 *mp a tempo*

Could you not watch? Could you not watch? Could you not watch with me one hour?

mp

65 *a tempo*

mp

69

69 *rit.*

69 *rit.*

Could you not watch? Could you not watch? Could you not watch with me?

69

rit.

73 *Slower*

pp rit. ppp

73 *Slower*

p

pp rit. ppp

I (Solo)

II (Accomp.)

COULD YOU NOT WATCH

OBOE

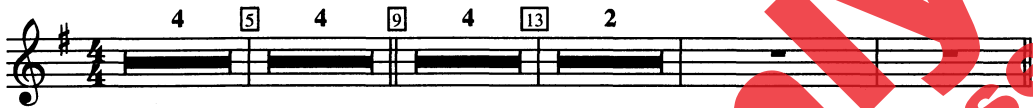
Music by
HAL H. HOPSON (ASCAP)

Moderately slow, with warmth and pathos (♩ = ca. 84)

INTRODUCTION

REFRAIN: *Choir only*

4 5 4 9 4 13 2



rit.

17 REFRAIN: *Choir & Congregation*

VERSE 2: Soloist

41 4 45 3

a tempo *rit.*

49 REFRAIN: Choir & Congregation

mp a tempo

53

mp a tempo

VERSE 3: Soloist

57 61

a tempo *p* *rit.*

65 REFRAIN: Choir & Congregation

mp a tempo

69

mp a tempo

73 Slower

rit. *pp* *rit.* *ppp*

THIS PAGE ONLY may be reproduced for congregational use.

COULD YOU NOT WATCH

REFRAIN: *First time: Choir; Second time: Choir & Congregation*
(the Congregation may sing in unison or four-part harmony)

Could you not watch? Could you not watch? Could you not watch with me one hour?

Could you not watch? Could you not watch? Could you not watch with me?

VERSES: *Soloist*

1. The spirit is willing, but the flesh is weak.
I soon must drink the bitter cup,
the cup of the world's salvation.

REFRAIN (*Choir & Congregation*)

2. O Father, forgive them, for they know not what they do.
The hour is at hand;
with swords they come to take me.

REFRAIN (*Choir & Congregation*)

3. Jerusalem weep not, weep not for yourselves,
but weep for your children,
yes, weep for your children's children.

REFRAIN (*Choir & Congregation*)

Preview Only
Legal Use Requires Purchase



Preview Only
Legal Use Requires Purchase



alfred.com