

Pachelbel-Canon

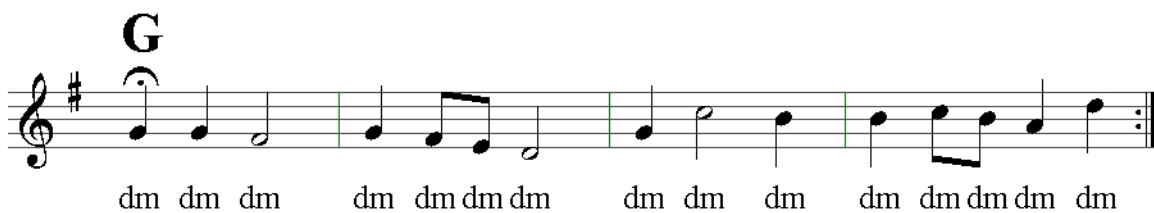
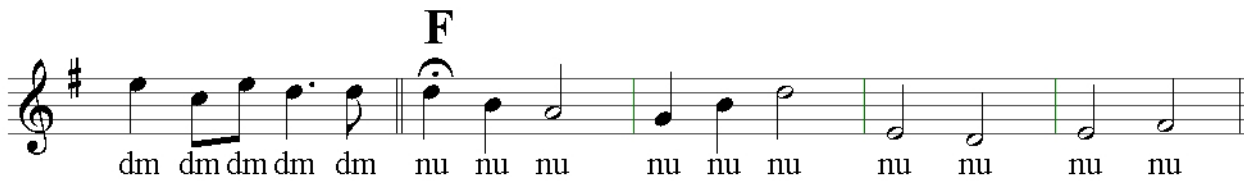
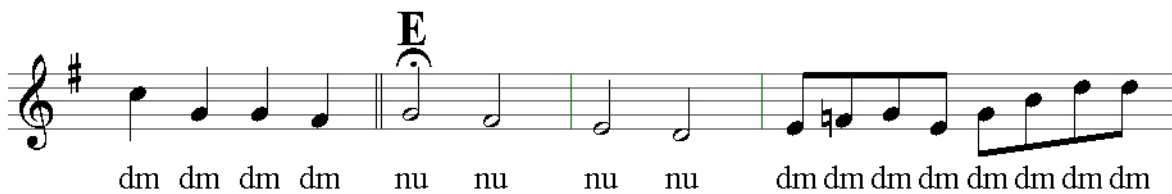
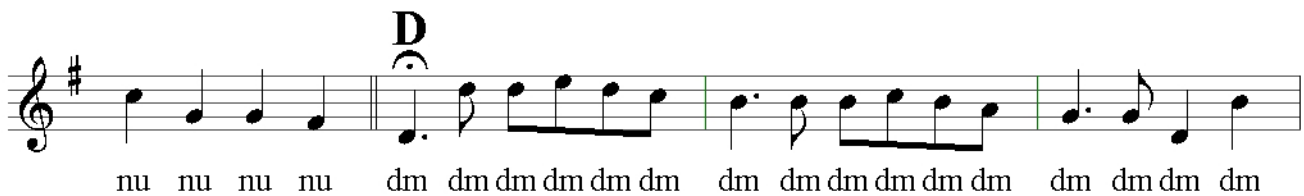
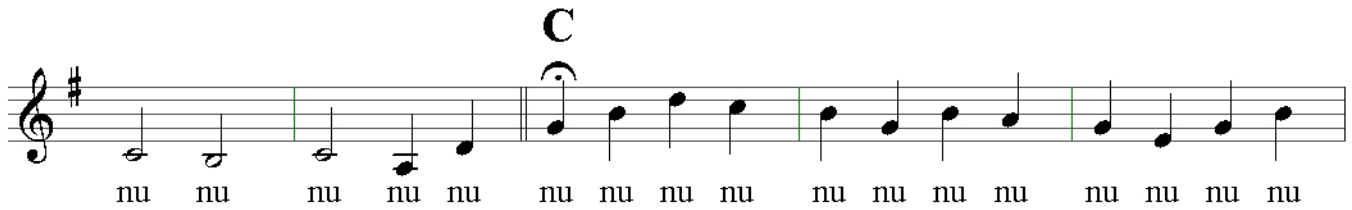
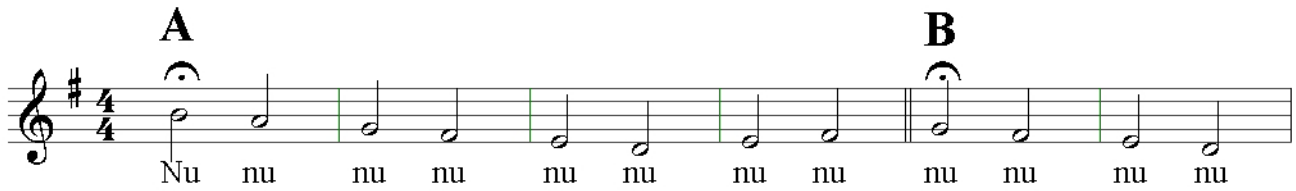
a cappella

für 8 Stimmgruppen

Pachelbel(1653 - 1706)

Bearbeitung: Peter Riedel

basso ostinato



Teil 1: S-A-T singen unisono durch

+ Bass

Teil 2: Kanon S1 - S2 - S3 - A1 - A2 - T1 - T2

Schluss-Akkord: alle auf Stimmsilbe "nu"