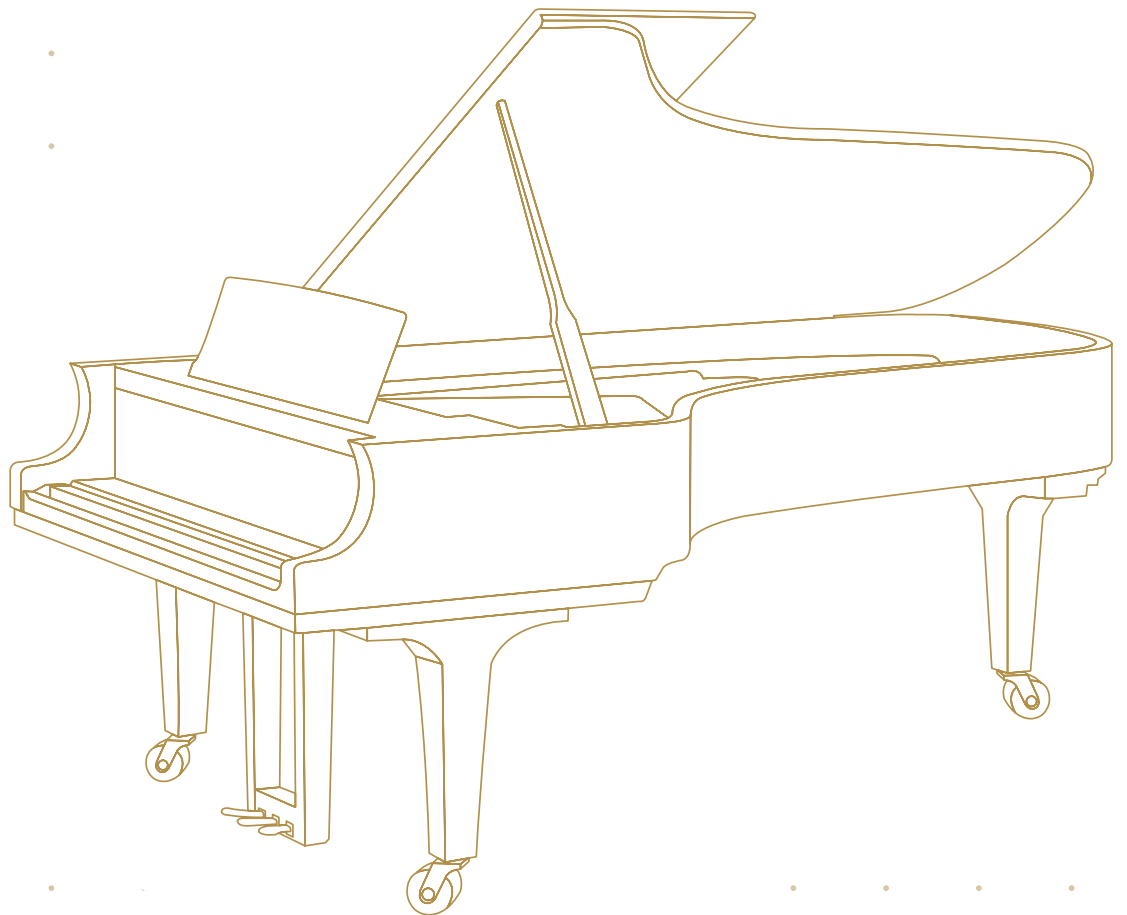


Franz Schubert

# SERENADE



FÜR KLAVIER

# Serenade

<b>MUSIK</b>	<b>Franz Schubert</b>
<b>ARRANGEMENT</b>	<b>August Horn</b>
<b>GENRE</b>	<b>Klassik, Klavier, Romantik</b>
<b>BESETZUNG</b>	<b>Klavier</b>

---

Das unerlaubte Kopieren von Musik ist gesetzlich verboten  
und kann straf- oder zivilrechtlich verfolgt werden.

Alle Rechte vorbehalten

© 2023 Classicato

Veröffentlicht

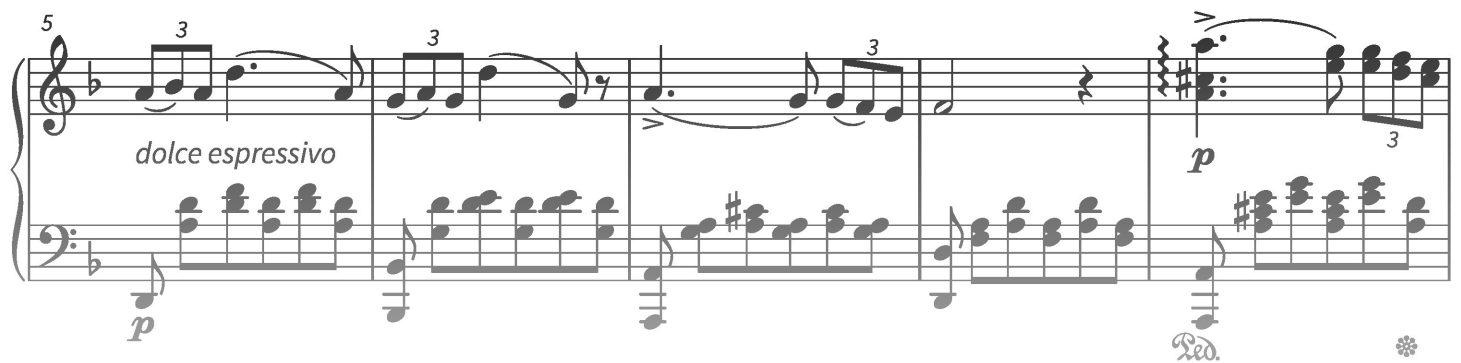
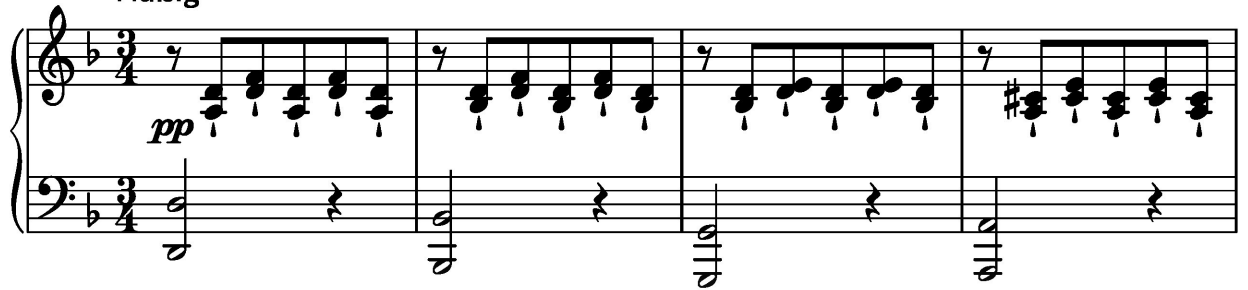
**Classicato**  
Hamburger Str. 180  
22083 Hamburg  
Deutschland

Transkription durch Soundnotation  
[www.soundnotation.com](http://www.soundnotation.com)

# Serenade

Musik: Franz Schubert

Mäßig



# PREVIEW



20

Measures 20-24 of the musical score. Measure 20 has a treble clef and a bass clef. Measure 21 has a treble clef and a bass clef. Measure 22 has a treble clef and a bass clef. Measure 23 has a treble clef and a bass clef. Measure 24 has a treble clef and a bass clef. The key signature is one flat (B-flat). The time signature is 4/4. The music features a melody in the treble and a bass line in the bass. There are triplets in measures 21 and 22. The piece ends with a double bar line in measure 24.

25

Measures 25-28 of the musical score. Measure 25 has a treble clef and a bass clef. Measure 26 has a treble clef and a bass clef. Measure 27 has a treble clef and a bass clef. Measure 28 has a treble clef and a bass clef. The key signature is one flat (B-flat). The time signature is 4/4. The music features a melody in the treble and a bass line in the bass. There are triplets in measures 25 and 26. The piece ends with a double bar line in measure 28.

Red. \* Red. \*

29

Measures 29-32 of the musical score. Measure 29 has a treble clef and a bass clef. Measure 30 has a treble clef and a bass clef. Measure 31 has a treble clef and a bass clef. Measure 32 has a treble clef and a bass clef. The key signature is one flat (B-flat). The time signature is 4/4. The music features a melody in the treble and a bass line in the bass. The dynamics are *mf* in measure 29 and *pp* in measure 32. The piece ends with a double bar line in measure 32.

33

Measures 33-36 of the musical score. Measure 33 has a treble clef and a bass clef. Measure 34 has a treble clef and a bass clef. Measure 35 has a treble clef and a bass clef. Measure 36 has a treble clef and a bass clef. The key signature is one flat (B-flat). The time signature is 4/4. The music features a melody in the treble and a bass line in the bass. The piece ends with a double bar line in measure 36.

# PREVIEW