

Suzuki[®]

CELLO SCHOOL

Volume 2
Cello Part
Revised Edition

AMPV:1.00

© 2014, 2007, 1978 Dr. Shinichi Suzuki
Sole publisher for the entire world except Japan:
Summy-Birchard, Inc.
Exclusive print rights administered by Alfred Music
All rights reserved Printed in USA

Available in the following formats: Book (0481S), Book & CD Kit (40700), and CD (0940)

Book	Book & CD Kit
ISBN-10: 0-87487-481-5	ISBN-10: 0-7390-9710-5
ISBN-13: 978-0-87487-481-5	ISBN-13: 978-0-7390-9710-6

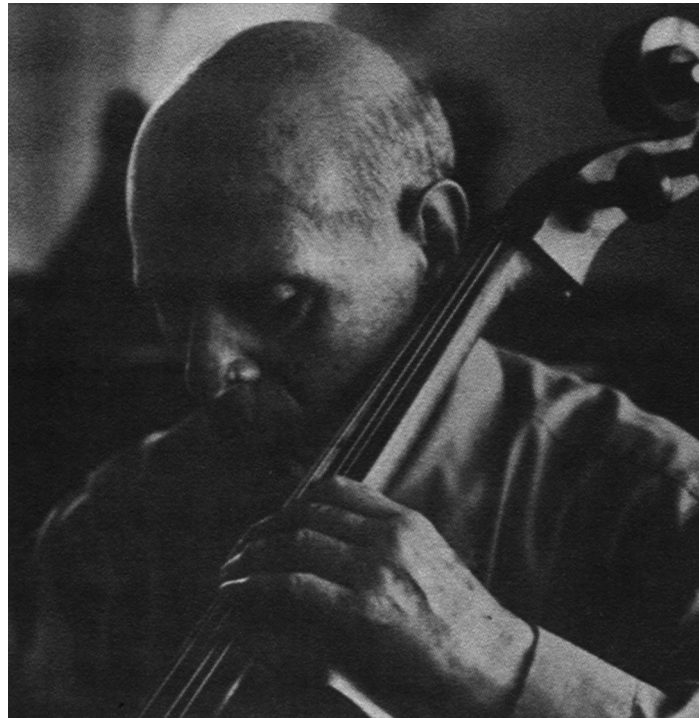
The Suzuki name, logo and wheel device
are trademarks of Dr. Shinichi Suzuki
used under exclusive license by Summy-Birchard, Inc.

Any duplication, adaptation or arrangement of the compositions
contained in this collection requires the written consent of the Publisher.
No part of this book may be photocopied or reproduced in any way without permission.
Unauthorized uses are an infringement of the U.S. Copyright Act and are punishable by law.

CONTENTS

		Page	Track Numbers*
1	Long, Long Ago , <i>T. H. Bayly</i>	6	1
2	May Time , <i>W. A. Mozart</i>	7	2
3	Minuet No. 1 , <i>J. S. Bach</i>	8	3
4	Minuet No. 3 , <i>J. S. Bach</i>	9	4
5	Chorus from “Judas Maccabaeus,” <i>G. F. Handel</i>	10	5
6	Hunters’ Chorus , <i>C. M. von Weber</i>	11	6
7	Musette from English Suite No. 3 , <i>J. S. Bach</i>	12	7
8	March in G , <i>J. S. Bach</i>	13	8
9	Theme from “Witches’ Dance,” <i>N. Paganini</i>	14	9
	Tonalization – The Moon Over the Ruined Castle , <i>R. Taki</i>	15	
10	The Two Grenadiers , <i>R. Schumann</i>	16	10
11	Gavotte , <i>F. J. Gossec</i>	17	11
12	Bourrée , <i>G. F. Handel</i>	18	12

*Piano accompaniments begin on track 13.



© 1979 Fritz Henle

Maestro Pablo Casals

1 Long, Long Ago

Moderato

T. H. Bayly

The main musical score consists of four staves of music in bass clef, 4/4 time. The first staff starts with a *mf* dynamic and includes fingerings 1, 4, 0, 1, 2, 4, 0, 1, 4, 2, 1, 0, 2, 1, 0, 4. The second staff continues with fingerings 5, 4, 0, 1, 2, 4, 0, 1, 4, 2, 1, 0, 1, 0, 4. The third staff begins with a *f* dynamic, has fingerings 9, 4, 2, 1, 0, 0, 2, 1, 0, 4, 4, 2, 1, 0, 0, 2, 1, 0, 4, and includes a *p* dynamic marking. The fourth staff starts with a *f* dynamic and has fingerings 13, 4, 0, 1, 2, 4, 0, 1, 4, 2, 1, 0, 1, 0, 4.

Variation

The variation section consists of four staves of music in bass clef, 4/4 time. The first staff starts with a *mf* dynamic and includes fingerings 1, 4, 4, 0, 1, 0, 1, 2, 4, 0, 0, 4, 1, 0, 4, 0, 2, 1, 0, 0, 2, 0, 1, 0, 4, 0. The second staff continues with fingerings 5, 4, 0, 4, 0, 1, 0, 1, 2, 4, 0, 0, 4, 1, 0, 4, 0, 2, 1, 0, 0, 1, 0, 4, 0, 3, 0, 0. The third staff begins with a *f* dynamic, has fingerings 9, 4, 0, 2, 1, 0, 0, 2, 0, 1, 0, 4, 0, 4, 0, 2, 1, 0, 0, 2, 0, 1, 0, 4, 0. The fourth staff starts with a *f* dynamic and has fingerings 13, 4, 0, 4, 0, 1, 0, 1, 2, 4, 0, 0, 4, 1, 0, 4, 0, 2, 1, 0, 0, 1, 0, 4, 0, 3, 0, 0.

10 The Two Grenadiers

R. Schumann

Moderato

1 *mf*

5 *p agitato*

9 *cresc.*

13 *più mosso*

17 *Moderato*

21 *f*

25 *rit.*

29 *mp*

33 *ff*

37 *allarg.*

Detailed description of the musical score: The score is for a bass clef instrument in 2/4 time. It begins with a 'Moderato' tempo. The first staff (measures 1-4) starts with a dynamic of *mf* and includes fingerings (0, 4, 0, 1, 0, 4, 1) and a breath mark (V). The second staff (measures 5-8) continues with fingerings (5, 0, 4, 3, 1, 0, 4, 0, 4, 1) and a breath mark (V). The third staff (measures 9-12) features a dynamic of *p agitato* and fingerings (9, 2, 1, 0, 4, 0, 1, 4, 2, 4, 0). The fourth staff (measures 13-16) has a *cresc.* marking and fingerings (13, 4, 0, 1, 2, 4, 0, 4, 2, 0, 4). The fifth staff (measures 17-20) is marked *più mosso* and includes fingerings (17, 4, 3, 0, 0, 4, 3, 0, 1, 4). The sixth staff (measures 21-24) returns to 'Moderato' tempo, marked *f*, with fingerings (21, 0, 4, 3, 0, 4, 4, 1, 4). The seventh staff (measures 25-28) is marked *rit.* and includes fingerings (25, 1, 2, 1, 0, 4, 0, 4, 0, 4, 1, 4). The eighth staff (measures 29-32) has a dynamic of *mp* and fingerings (29, 1, 2, 1, 0, 4, 0, 1, 2, 1, 0, 4, 0, 1, 4). The ninth staff (measures 33-36) is marked *ff* and includes fingerings (33, 2, 4, 2, 1, 0, 1, 4, 4, 4, 4, 0). The tenth staff (measures 37-40) is marked *allarg.* and includes fingerings (37, 4, 0, 4, 1, 4, 1, 2, 1, 0, 4). The score concludes with a double bar line and a fermata.