

Advent

7. National Christmas Tree

Jazz Combo

Music by GERT TH. WALTER
Christmas Suite Box, Op. 13 (2021)

A Majestically. $\text{♩} = 96$

Alto Sax

B \flat Trumpet

Guitar

Pianoforte

Bass

Drum Set

Hi-Hat

Hi-Hat Pedal

VERSE.

Sx.

Tr.

C F D min G7 C E A min G7 C

Git.

Pfte.

Bs.

D.S

7. National Christmas Tree

B

Sx. 8

Tr.

p < f > p

G C D 9 G C

4fr. 4fr.

Git. 8

Pfte.

Bs.

D.S.

CHORUS.

Sx. 12

Tr.

decresc. *mf* *f*

f

F B dim C/E D min/F C/G G7 C/G G7 C C/G G7

9fr.

Git. 12

Pfte.

Bs.

D.S.

Alto Sax

7. National Christmas Tree

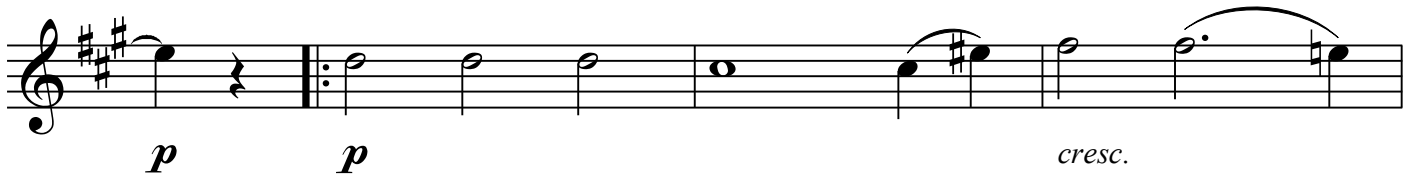
Music by GERT TH. WALTER
Christmas Suite Box, Op. 13 (2021)

A

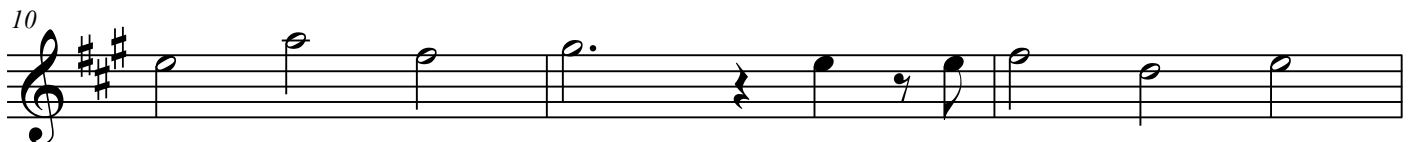
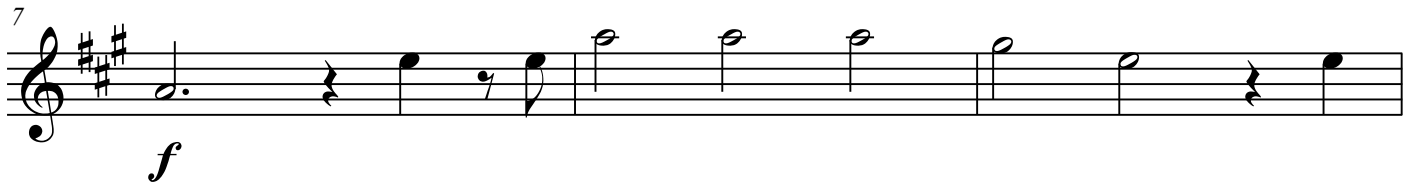
Majestically. $\text{♩} = 96$



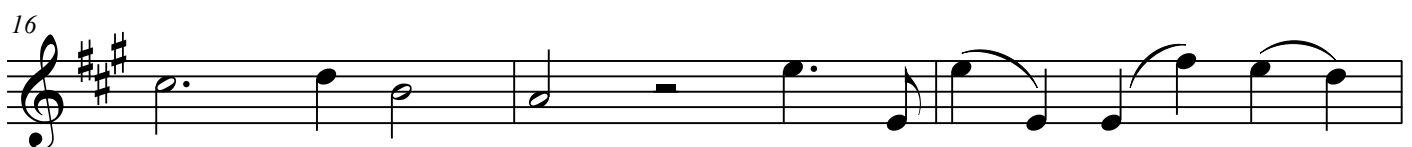
VERSE.



B



CHORUS.



7. National Christmas Tree

Music by GERT TH. WALTER
Christmas Suite Box, Op. 13 (2021)

A Majestically. $\text{♩} = 96$

C/G

G7

C



VERSE.

C

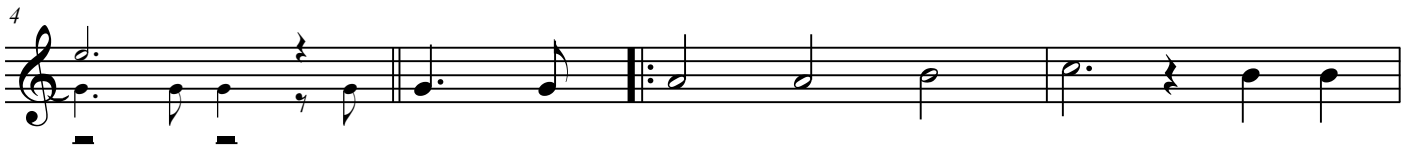
F

D min

G7

C

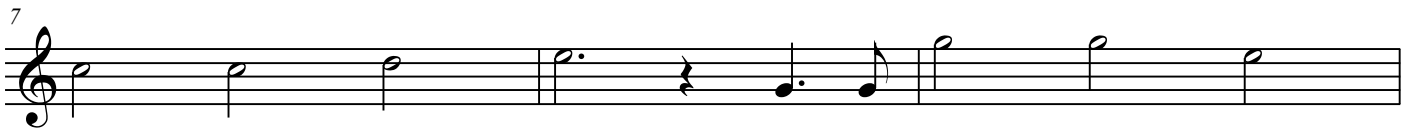
E



A min

G7

C

**B**

G

C

D 9

G

C



F

B dim

C/E

D min/F

C/G

G7

C/G

G7

C



CHORUS.

C/G

G7

C/G

F/G

G

C

G7

C/G

F/G

G



Pianoforte

7. National Christmas Tree

Music by GERT TH. WALTER
Christmas Suite Box, Op. 13 (2021)

A Majestically. $\text{♩} = 96$

Musical notation for section A, measures 1-4. The piece is in 3/4 time. The right hand features a melody with eighth and quarter notes, while the left hand provides a simple harmonic accompaniment with quarter notes.

VERSE.

Musical notation for the Verse, measures 5-8. The tempo remains Majestically. The music is marked with a forte (*f*) dynamic. The right hand plays chords and single notes, while the left hand has a steady bass line.

B

Musical notation for section B, measures 9-11. The music is marked with a mezzo-forte (*mf*) dynamic. The right hand continues with chords and moving lines, while the left hand provides a solid harmonic foundation.

Musical notation for section B, measures 12-15. The music continues with a mezzo-forte (*mf*) dynamic. The right hand features a melodic line with some grace notes, and the left hand has a more active bass line with some ties.

CHORUS.

Musical notation for the Chorus, measures 16-19. The music is marked with a forte (*f*) dynamic. The right hand plays chords and moving lines, while the left hand has a steady bass line.