

TABLE OF CONTENTS

ABOUT THE AUTHOR	4
INTRODUCTION	5

CHAPTER 1—Music Review	6
The Grand Staff, Clefs and Ledger Lines	6
The Keyboard	7
Half Steps and Accidentals	7
Rhythmic Values of Notes, Rests and Measures	8
Time Signatures and Measures	8
Major Scales and Key Signatures	9
Fingerings for Major Scales	10
Intervals	11
Interval Inversion	11
Cycle of 5ths	12
Relative Minor	13
Fingerings for Natural Minor Scales	14
Triads	15
Diatonic Triads	16
Form and Lead Sheets	17

CHAPTER 2—The Twelve-Bar Blues	18
Transposing the Twelve Bar Blues	19
Making a Blues Melody with Arpeggios	20
<i>Mardi Gras</i>	20
Triplets	21
Inverting Triads	22
Inversion Exercises	23
The Left Hand—Swing or Shuffle Feel	24
<i>Working</i>	24
<i>Melancholy Blue</i>	26
Funky Thunky	27
<i>Funky Thunky</i>	27
Major Chords in the Minor Blues	28
<i>Worrying Blues</i>	28
Write Your Own Twelve-Bar Blues	29

CHAPTER 3—Blues Melodies	30
Transposing the Twelve-Bar Blues	31
<i>Drowning in My Blues</i>	31
The Major Pentatonic Scale	32
<i>The Major's Blues</i>	33
The Minor Pentatonic Scale	34
<i>The Miner's Blues</i>	35
Dominant 7th Chords	36
The Blues Scale	37
Dominant 7th Chords and The Blues Scale	38
<i>Get To It</i>	38
Combining Pentatonic Scales	39
<i>Everything Blues</i>	39
Tension and Resolution	40
<i>C Blues</i>	41

CHAPTER 4—Playing a Shuffle	42
<i>Chicago Time</i>	43
Fun with The $\flat 5$	44
Basslines	45
<i>Flat Five Shuffle</i>	46
Tremolos and Fills	45
<i>Trems and Fills</i>	47

CHAPTER 5—Piano Blues Sounds	48
<i>Otis's Blues</i>	49
Three-Note $\flat 5$ Lick	50
Four-Note $\flat 5$ Lick	51
Tension and Resolution	52
<i>Lafayette's Blues</i>	53
Chicago Piano Sounds on The Minor Blues	55
<i>Rush's Roads</i>	55
Playing off of Triads	56
Bending The 3rd	56
<i>Triad Blues</i>	57
Playing off the Dominant 7th Chord	58
<i>Dominant Blues</i>	59

CHAPTER 6—A Look at Boogie-Woogie 60

<i>Boogie Blues</i>	61
Boogie-Woogie Bass Lines	62
Walking The Bass	63
<i>Walking Boogie Blues</i>	63
Minor Boogie and Minor 7th Chords	64
<i>So Long Boogie</i>	64
<i>Boogie Train</i>	65
Jimmy Yancey-Style Boogie-Woogie	66
<i>Jimmy's Boogie</i>	67

**CHAPTER 7—Rhythm, Comping,
Playing in a Band 68**

Comping	69
<i>Blues in G</i>	69
Voice Leading	70
Comping in D	70
<i>Comping Shuffle in D</i>	71
The Beauty of Fills	72
<i>Guitar Player</i>	73
Comping With Octaves	74
<i>Octavia in F</i>	74
Dominant 7th Chord Inversions	75
Voice Leading With Dominant 7th Chords	76
Hideaway Comp	77
<i>You Can Run But You Can't Hide</i>	77
Scratch My Back Comp	78
<i>The Blues Itch</i>	78
Parallel 6ths	78
<i>Parallel Blues</i>	79
Minor 7th Chord Inversions	80
<i>Ten O'Clock Blues</i>	81

**CHAPTER 8—Intros, Endings
and Turnarounds 82**

Turnarounds	82
Neighboring Chords	83
More Turnarounds	84
Turning Turnarounds into Endings	86
Following the Leader	87
Intros	88

**CHAPTER 9—Walking Bass and an
Introduction to the Slow Blues 90**

<i>Walking the Blues</i>	90
Building a Walking Bass Line	91
Getting From One Measure to the Next	92
Practice Making Bass Lines	93
ii-V-I	94
<i>Sad and Lonely Blues</i>	94

DISCOGRAPHY 95

A compact disc is available for this book. This disc can make learning with this book easier and more enjoyable. This symbol will appear next to every example that is on the CD. Use the CD to help insure that you are capturing the feel of the examples, interpreting the rhythms correctly, and so on. The track numbers below the symbols correspond directly to the example you want to hear. Track 1 will help you tune an electronic keyboard to this CD. Have fun!

CHAPTER 1

Music Review

The goal of this book is to get you playing blues piano, even if you don't know anything about it yet. It does assume that you have a little experience at the piano, and it will require you to read music. This chapter reviews some basic music and keyboard concepts to get you started.

THE GRAND STAFF, CLEFS AND LEDGER LINES

Piano music contains notes written in both the *treble clef* and the *bass clef*. Generally, the notes in the treble clef are played with the right hand, and the notes in the bass clef are played with the left hand.

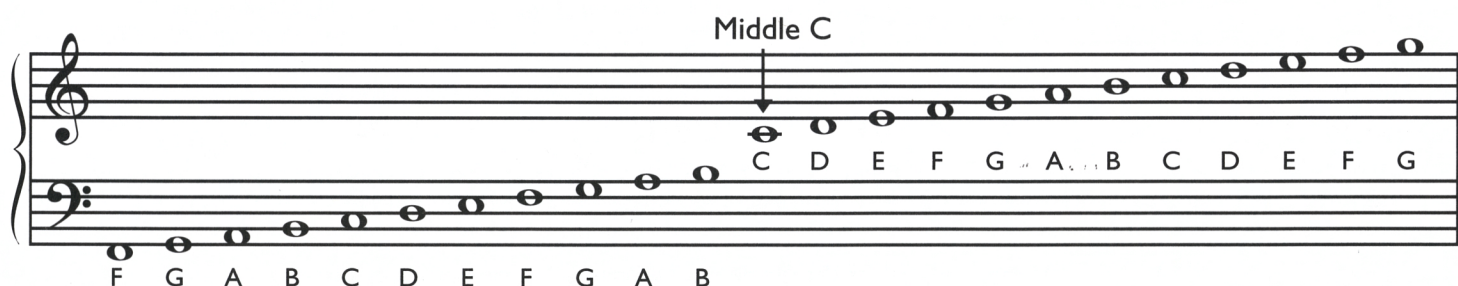


Sign for the bass or “F” clef
The two dots surround the line for the note F.



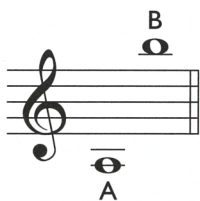
Sign for the treble or “G” clef
The curled part surrounds the line for the note G.

The treble and bass clefs together make up the *grand staff*.



Middle C is in the middle of the grand staff. It sits on a *ledger line* because it lies between the two clefs and is an extension of either one. Ledger lines function exactly like lines in the staff. We can further extend either the treble or the bass clef by as many ledger lines as necessary above or below the staff.

Ledger lines in the treble clef.



Ledger lines in the bass clef.

