

Collection Jozsef Molnar

Friperies

Pour Cor des Alpes

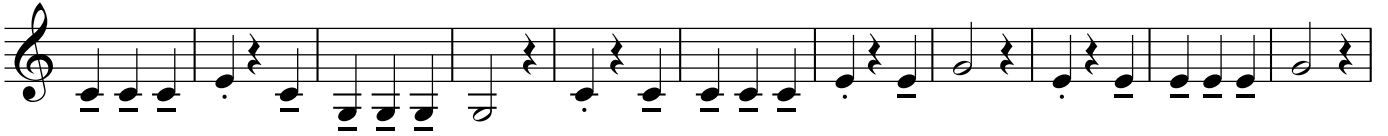
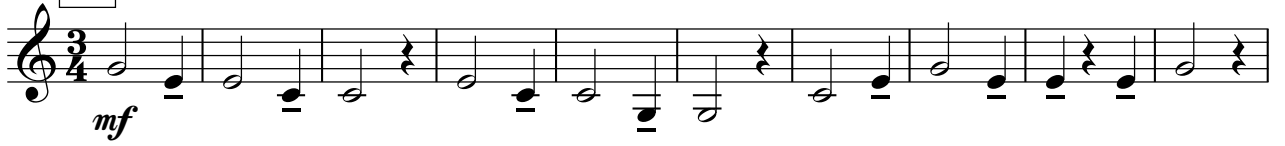


Studio Edouard Curchod - Vevey

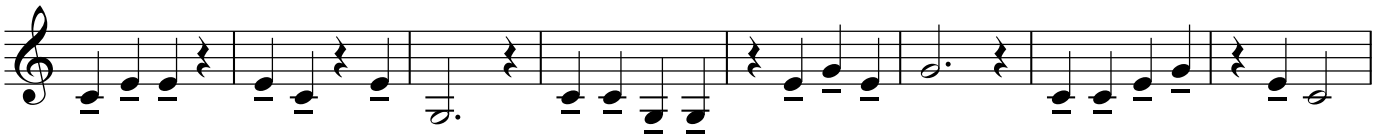
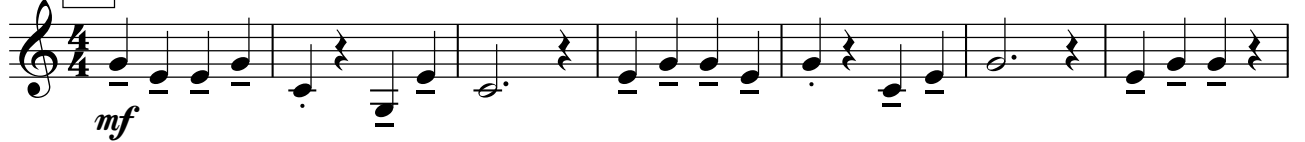
Le métronome 1

Jozsef Molnar

A ♩ = 80



B ♩ = 80



C ♩ = 80



Le métronome 2

Jozsef Molnar

A ♩ = 76

Section A consists of 12 measures in 4/4 time, marked *mf*. The melody is written on a single treble clef staff. It begins with a quarter rest, followed by a quarter note G4, a quarter note A4, and a quarter note B4. The piece concludes with a half note G4.

B ♩ = 76

Section B consists of 12 measures in 4/4 time, marked *mf*. The melody is written on a single treble clef staff. It begins with a quarter note G4, followed by a quarter note A4, and a quarter note B4. The piece concludes with a half note G4.

C ♩ = 76

Section C consists of 12 measures in 4/4 time, marked *mf*. The melody is written on a single treble clef staff. It begins with a quarter note G4, followed by a quarter note A4, and a quarter note B4. The piece concludes with a half note G4.

Le métronome 3

Jozsef Molnar

A ♩ = 69

Section A is in 4/4 time with a tempo of ♩ = 69. It consists of three staves of music. The first staff begins with a *mf* dynamic marking. The melody is primarily composed of eighth and sixteenth notes, with some rests and a final accented note. The accompaniment features a steady eighth-note pattern in the lower register.

B ♩ = 69

Section B is in 3/4 time with a tempo of ♩ = 69. It consists of three staves of music. The first staff begins with a *mf* dynamic marking. The melody is primarily composed of eighth and sixteenth notes, with some rests and a final accented note. The accompaniment features a steady eighth-note pattern in the lower register.

C ♩ = 69

Section C is in 4/4 time with a tempo of ♩ = 69. It consists of four staves of music. The first staff begins with a *mf* dynamic marking. The melody is primarily composed of eighth and sixteenth notes, with some rests and a final accented note. The accompaniment features a steady eighth-note pattern in the lower register. The section includes dynamic markings of *mf* and *f* throughout.

Le métronome 4

Jozsef Molnar

A ♩ = 66

Section A is in 3/4 time with a tempo of 66 bpm. It consists of three staves of music. The first staff has dynamics *mf*, *f*, *mf*, and *f*. The second staff has dynamics *mf*, *f*, and *mf*. The third staff has dynamics *mf*, *f*, *mf*, *f*, *mf*, and *f*. The piece concludes with a double bar line.

B ♩ = 66

Section B is in 4/4 time with a tempo of 66 bpm. It consists of three staves of music. The first staff has dynamics *mf*, *f*, *mf*, and *f*. The second staff has dynamics *mf* and *mf*. The third staff has dynamics *f*, *mf*, and *f*. The piece concludes with a double bar line.

C ♩ = 72

Section C is in 2/4 time with a tempo of 72 bpm. It consists of four staves of music. The first staff has dynamics *mf*, *f*, *mf*, and *f*. The second staff has dynamics *mf* and *mf*. The third staff has dynamics *f*, *mf*, and *f*. The fourth staff has dynamics *mf* and *f*. The piece concludes with a double bar line.

Le métronome 5

Jozsef Molnar

A ♩ = 66

Section A consists of 12 measures in 3/4 time, marked *mf*. The melody features eighth and sixteenth notes with accents and slurs. The bass line provides a steady accompaniment with eighth and sixteenth notes.

B ♩ = 63

Section B consists of 12 measures in 4/4 time, marked *mf*. It features a change in meter from 4/4 to 5/4 and back to 4/4. The melody includes triplet eighth notes and accents. The bass line has a consistent eighth-note accompaniment.

C ♩ = 66

Section C consists of 12 measures in 3/4 time, marked *mf*. The melody is characterized by eighth and sixteenth notes with accents and slurs. The bass line features a steady accompaniment with eighth and sixteenth notes.

Le métronome 6

Jozsef Molnar

A ♩ = 58

Musical score for section A, measures 1-12. The piece is in 4/4 time with a tempo of ♩ = 58. It consists of three staves. The first staff begins with a *mf* dynamic, followed by a *p* dynamic, and ends with *mf*. The second and third staves feature triplets and various dynamics including *f* and *mf*. The piece concludes with a double bar line.

B ♩ = 60

Musical score for section B, measures 13-24. The piece is in 4/4 time with a tempo of ♩ = 60. It consists of three staves. The first staff starts with *mf* and ends with *f*. The second staff begins with *mf* and ends with *mf*. The third staff starts with *f*, includes a *p* dynamic, and ends with *f*. The piece concludes with a double bar line.

C ♩ = 80

Musical score for section C, measures 25-36. The piece is in 4/4 time with a tempo of ♩ = 80. It consists of three staves. The first staff starts with *f*, includes a *p* dynamic, and ends with *f*. The second staff begins with *mf*, includes a *f* dynamic, and ends with *mf*. The third staff starts with *p*, includes *mf* and *f* dynamics, and ends with *p*. The piece concludes with a double bar line.

ALPHORN

ALPHORN

EMR 728	ISOZ, Etienne	Résonances et Anniversaire
EMR 737	MOLNAR, Jozsef	100 Valses et 10 Humoresques
EMR 4359	MOLNAR, Jozsef	18 Cartes de Visites
EMR 799	MOLNAR, Jozsef	18 Humorous Pieces
EMR 799	MOLNAR, Jozsef	18 Lustige Stücke
EMR 799	MOLNAR, Jozsef	18 Pièces Amusantes
EMR 4359	MOLNAR, Jozsef	18 Visitenkarten
EMR 737	MOLNAR, Jozsef	25 Cartes de Visites
EMR 737	MOLNAR, Jozsef	25 Visitenkarten
EMR 798	MOLNAR, Jozsef	58 Daily Drills
EMR 798	MOLNAR, Jozsef	58 Exercices Journaliers
EMR 798	MOLNAR, Jozsef	58 Tägliche Übungen
EMR 18363	MOLNAR, Jozsef	Compositions Florales
EMR 4462	MOLNAR, Jozsef	Eine Woche mit dem Alphorn
EMR 793	MOLNAR, Jozsef	Initiation au Plaisir
EMR 4488	MOLNAR, Jozsef	La Joie sur les 12 notes du Cor des Alpes
EMR 742	MOLNAR, Jozsef	Méthode de Rythme
EMR 4462	MOLNAR, Jozsef	Rendez-vous avec le Cor des Alpes...
EMR 709	STURZENEGGER, K.	16 Stücke für Alph. (Solos/Duets F+G)
EMR 711	STURZENEGGER, K.	8 Trios & Quartettes (Alphorn in F + Gb)

ALPHORN & PIANO

EMR 776	AEGLER, Gottfried	Jozsef in Form (Alphorn in F)
EMR 775	AEGLER, Gottfried	Jozsef in Form (Alphorn in Gb)
EMR 774	AEGLER, Gottfried	Alphorn Polka (Alphorn in F)
EMR 773	AEGLER, Gottfried	Alphorn Polka (Alphorn in Gb)
EMR 786	DAETWYLER, Jean	Abendlied (Alphorn in F)
EMR 785	DAETWYLER, Jean	Abendlied (Alphorn in Gb)
EMR 784	DAETWYLER, Jean	Bergsuite (Alphorn in F)
EMR 783	DAETWYLER, Jean	Bergsuite (Alphorn in Gb)
EMR 786	DAETWYLER, Jean	Chant du Soir (Alphorn in F)
EMR 785	DAETWYLER, Jean	Chant du Soir (Alphorn in Gb)
EMR 768	DAETWYLER, Jean	Dialogue Concertant (Alphorn in F)
EMR 767	DAETWYLER, Jean	Dialogue Concertant (Alphorn in Gb)
EMR 786	DAETWYLER, Jean	Evening Song (Alphorn in F)
EMR 785	DAETWYLER, Jean	Evening Song (Alphorn in Gb)
EMR 770	DAETWYLER, Jean	Humoresque (Alphorn in F)
EMR 769	DAETWYLER, Jean	Humoresque (Alphorn in Gb)
EMR 784	DAETWYLER, Jean	Mountain Suite (Alphorn in F)
EMR 783	DAETWYLER, Jean	Mountain Suite (Alphorn in Gb)
EMR 784	DAETWYLER, Jean	Suite Montagnarde (Alphorn in F)
EMR 783	DAETWYLER, Jean	Suite Montagnarde (Alphorn in Gb)
EMR 725	ISOZ, Etienne	Andante et à la musette (Alph. in Gb)
EMR 723	MAGNIER, François	Poème Irlandais (Alphorn in Gb)
EMR 741	MORTIMER, J.G.	Alpine Cowboy (Alphorn in Gb)
EMR 755	MORTIMER, J.G.	Big Ben Suite (F)
EMR 756	MORTIMER, J.G.	Big Ben Suite (Gb)
EMR 740	MORTIMER, John G.	Alpine Cowboy (Alphorn in F)
EMR 714	MORTIMER, John G.	Alpine Rhapsody (Alphorn in F)
EMR 721	MORTIMER, John G.	Alpine Rhapsody (Alphorn in Gb)
EMR 748	MOZART, Leopold	Sinfonia Pastorella (Alphorn in F)
EMR 19278	MOZART, Leopold	Sinfonia Pastorella (Alphorn in G)
EMR 760	MOZART, Leopold	Sinfonia Pastorella (Alphorn in Gb)
EMR 732	PRINTEMPS, Guy	Adagio et Dance (Alphorn in Gb)
EMR 739	REBER Peter	Swiss Lady (Alphorn in F)
EMR 738	REBER Peter	Swiss Lady (Alphorn in Gb)
EMR 743	REIFT, Marc	Schweiz. Volkslied (Alph. F + Gb)
EMR 701	RUETTI, Carl	Konzert (Alphorn in F)
EMR 772	SOMMER, Hans-Jürg	A Bout de Souffle (Alphorn in F)
EMR 771	SOMMER, Hans-Jürg	A Bout de Souffle (Alphorn in Gb)
EMR 772	SOMMER, Hans-Jürg	Ausser Atem (Alphorn in F)
EMR 771	SOMMER, Hans-Jürg	Ausser Atem (Alphorn in Gb)
EMR 780	SOMMER, Hans-Jürg	Largo (Alphorn in F)
EMR 779	SOMMER, Hans-Jürg	Largo (Alphorn in Gb)
EMR 772	SOMMER, Hans-Jürg	Out Of Breath (Alphorn in F)
EMR 771	SOMMER, Hans-Jürg	Out Of Breath (Alphorn in Gb)
EMR 734	STURZENEGGER, K.	Cassation (Alphorn in F)
EMR 708	STURZENEGGER, K.	Cassation (Alphorn in Gb)
EMR 736	TAILOR, Norman	Watering the Periwinkles (Alphorn G)
EMR 735	TAILOR, Norman	Watering the Periwinkles (Alph. in F)
EMR 762	TRADITIONAL	Amazing Grace (Alphorn in F)
EMR 761	TRADITIONAL	Amazing Grace (Alphorn in Gb)
EMR 726	TRADITIONAL	Ranz des Vaches (Alph. in F + Gb)
EMR 788	TSCHANNEN, Fritz	Alpine Idyll (Alphorn in F)
EMR 787	TSCHANNEN, Fritz	Alpine Idyll (Alphorn in Gb)

ALPHORN & PIANO (ORGAN)

EMR 702	ARMITAGE, Dennis	Alphorn Ballad (Alphorn in F + Gb)
EMR 720	ARMITAGE, Dennis	Alphorn Serenade (Alphorn in F + Gb)
EMR 703	JAMES, Ifor	Alphorn Memory (Alphorn in Gb)

Alphorn & Piano (Organ) (Fortsetzung - Continued - Suite)

EMR 734	STURZENEGGER, K.	Cassation (Alphorn in F)
EMR 708	STURZENEGGER, K.	Cassation (Alphorn in Gb)
EMR 719	TRADITIONAL	Amazing Grace (1, 2 or 3 Alph. F+Gb)
EMR 726	TRADITIONAL	Ranz des Vaches (Alph. in F + Gb)

ALPHORN & PIANO (DRUMS & BASS GUITAR OPTIONAL)

EMR 739	REBER Peter	Swiss Lady (Alphorn in F)
EMR 738	REBER Peter	Swiss Lady (Alphorn in Gb)

ALPHORN & ORGAN

EMR 753	DAETWYLER, Jean	Andante and Humoresque (Alph. in F)
EMR 754	DAETWYLER, Jean	Andante and Humoresque (Alph. in Gb)
EMR 707	GLEISSNER, W.	Alphorn und Orgel (Alph. F + Gb)
EMR 724	GRETY, André E. M.	Guillaume Tell (Molnar) (Alph. in Gb)
EMR 727	ISOZ, Etienne	Kermesse (Alphorn in F#)
EMR 731	ISOZ, Etienne	Récitatif et Prière (Alphorn in F#)
EMR 733	PRINTEMPS, Guy	Adagio et Dance (Alphorn in F#)
EMR 704	RUETTI, Carl	Suite Pastorale (Alphorn in Gb)
EMR 734	STURZENEGGER, K.	Cassation (Alphorn in F)
EMR 708	STURZENEGGER, K.	Cassation (Alphorn in Gb)
EMR 715	STURZENEGGER, K.	Paradis des Montagnes (Alph. in Gb)
EMR 726	TRADITIONAL	Ranz des Vaches (Alph. in F + Gb)

ALPHORN & BRASS BAND

EMR 3150	AEGLER, Gottfried	Alphorn Polka (Alphorn in F)
EMR 3137	AEGLER, Gottfried	Alphorn Polka (Alphorn in Gb)
EMR 1095	ARMITAGE, Dennis	Alphorn Ballad (Alph. in F + Gb)
EMR 1238A	ARMITAGE, Dennis	Alphorn Serenade (Alphorn in F)
EMR 1238B	ARMITAGE, Dennis	Alphorn Serenade (Alph. in Gb)
EMR 9004	DAETWYLER, Jean	Sérénade
EMR 3148	MORTIMER, John G.	Alpine Cowboy (Alphorn F)
EMR 3135	MORTIMER, John G.	Alpine Cowboy (Alphorn in Gb)
EMR 3040	REBER Peter	Swiss Lady (Solo Alphorn Gb)
EMR 3489	REBER, Peter	Swiss Lady (Alphorn in F)
EMR 3008	SCHNEIDERS, Hardy	Watering the Periwinkles (Alph. in Gb)
EMR 3153	SOMMER, Hans-Jürg	A Bout de Souffle (Alphorn in F)
EMR 3140	SOMMER, Hans-Jürg	A Bout de Souffle (Alphorn in Gb)
EMR 11255	SOMMER, Hans-Jürg	Largo
EMR 11256	SOMMER, Hans-Jürg	Largo
EMR 3151	SOMMER, Hans-Jürg	Largo
EMR 3754	SOMMER, Hans-Jürg	Largo
EMR 3755	SOMMER, Hans-Jürg	Largo
EMR 3138	SOMMER, Hans-Jürg	Largo (Alphorn in Gb)
EMR 3152	TRADITIONAL	Amazing Grace (Alphorn in F)
EMR 3139	TRADITIONAL	Amazing Grace (Alphorn in Gb)

ALPHORN & WIND BAND

EMR 10687	AEGLER, Gottfried	Alphorn Polka (Alphorn in F)
EMR 10491	AEGLER, Gottfried	Alphorn Polka (Alphorn in Gb)
EMR 10688	AEGLER, Gottfried	Jozsef in Form (Alphorn in F)
EMR 10492	AEGLER, Gottfried	Jozsef in Form (Alphorn in Gb)
EMR 1562	ARMITAGE, Dennis	Alphorn Ballad (Alphorn in Eb)
EMR 1555	ARMITAGE, Dennis	Alphorn Ballad (Alphorn in F)
EMR 1002	ARMITAGE, Dennis	Alphorn Ballad (Alphorn in Gb)
EMR 1237A	ARMITAGE, Dennis	Alphorn Serenade (Alphorn in F)
EMR 1237B	ARMITAGE, Dennis	Alphorn Serenade (Alph. in Gb)
EMR 10170	DAETWYLER, Jean	Sinfonietta Alpestre (Alphorn in F)
EMR 10501	MORTIMER, John G.	Alpine Cowboy (Alphorn Gb)
EMR 10685	MORTIMER, John G.	Alpine Cowboy (Alphorn in F)
EMR 10204	MOZART, Leopold	Sinfonia Pastorella (Alphorn in F)
EMR 10205	MOZART, Leopold	Sinfonia Pastorella (Alph. in Gb)
EMR 10382	REBER Peter	Swiss Lady (Alphorn in Gb)
EMR 10810	REBER, Peter	Swiss Lady (Alphorn in F)
EMR 10686	SOMMER, Hans-Jürg	A Bout de Souffle (Alphorn in F)
EMR 10486	SOMMER, Hans-Jürg	A Bout de Souffle (Alphorn in Gb)
EMR 10686	SOMMER, Hans-Jürg	Ausser Atem (Alphorn in F)
EMR 10486	SOMMER, Hans-Jürg	Ausser Atem (Alphorn in Gb)
EMR 10673	SOMMER, Hans-Jürg	Largo (Alphorn in F)
EMR 10499	SOMMER, Hans-Jürg	Largo (Alphorn in Gb)
EMR 10686	SOMMER, Hans-Jürg	Out Of Breath (Alphorn in F)
EMR 10486	SOMMER, Hans-Jürg	Out Of Breath (Alphorn in Gb)
EMR 1848	TAILOR, Norman	Watering the Periwinkles (Alph. in F)
EMR 10412	TAILOR, Norman	Watering the Periwinkles (Alph.in Gb)
EMR 10684	TRADITIONAL	Amazing Grace (Alphorn in F)
EMR 10500	TRADITIONAL	Amazing Grace (Alphorn in Gb)