

Edvard Grieg

NOTTURNO



FÜR KLAVIER

Notturmo

MUSIK	Edvard Grieg
GENRE	Klassik, Klaviermusik, Romantik
BESETZUNG	Klavier

Diese Ausgabe ist ausschließlich für den persönlichen Gebrauch bestimmt. Das Kopieren, Vervielfältigen oder Weitergeben ohne Genehmigung ist gesetzlich verboten und kann rechtliche Konsequenzen nach sich ziehen.

Erstellung und Vertrieb
Soundnotation als Teil der Sonovative GmbH
Hamburger Str. 180
22083 Hamburg
Deutschland
www.soundnotation.com

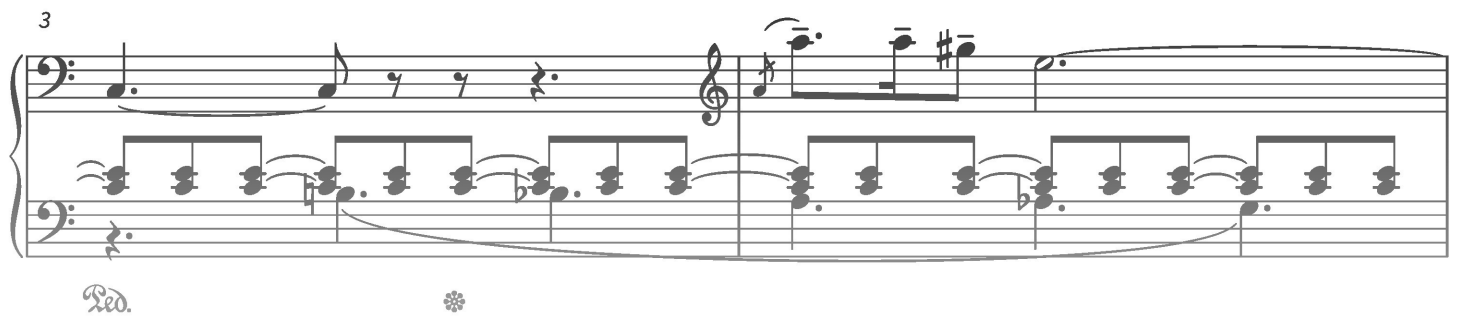
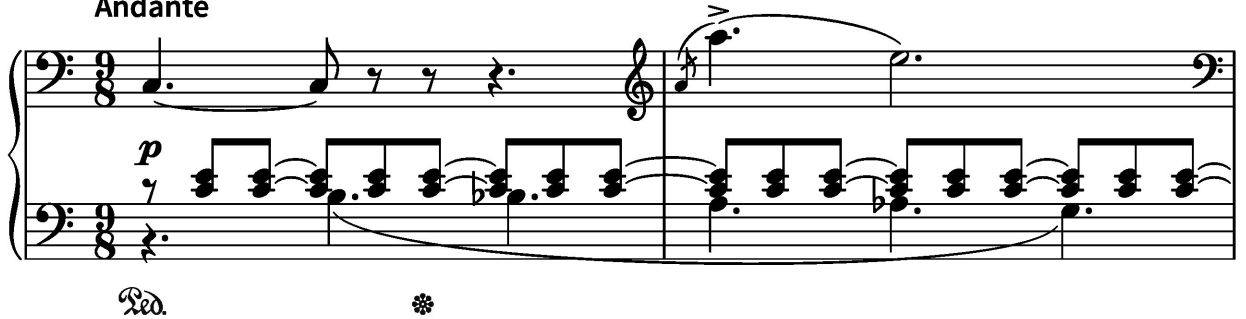
Alle Rechte vorbehalten
© 2025 Classicato

Notturmo

Op. 54 Nr. 4

Musik: Edvard Grieg

Andante



PREVIEW



Measures 9 and 10 of the musical score. Measure 9 features a piano (*p*) dynamic. The right hand has a triplet of eighth notes (F#, G, A) beamed together, followed by a quarter note (B) and a dotted half note (C). The left hand has a quarter note (F), a quarter note (G), and a dotted half note (C). Measure 10 features a *Red.* (Reduction) marking. The right hand has a quarter note (B), a quarter note (C), and a dotted half note (D). The left hand has a quarter note (F), a quarter note (G), and a dotted half note (C).

Measures 11 and 12 of the musical score. Measure 11 features a *cresc.* (crescendo) marking. The right hand has a triplet of eighth notes (F#, G, A) beamed together, followed by a quarter note (B) and a dotted half note (C). The left hand has a quarter note (F), a quarter note (G), and a dotted half note (C). Measure 12 features a *f* (forte) dynamic. The right hand has a quarter note (B), a quarter note (C), and a dotted half note (D). The left hand has a quarter note (F), a quarter note (G), and a dotted half note (C). A *Red.* (Reduction) marking is present at the end of the measure.

Measures 13 and 14 of the musical score. Measure 13 features a *poco rit.* (poco ritardando) marking. The right hand has a triplet of eighth notes (F#, G, A) beamed together, followed by a quarter note (B) and a dotted half note (C). The left hand has a quarter note (F), a quarter note (G), and a dotted half note (C). Measure 14 features a *f* (forte) dynamic. The right hand has a quarter note (B), a quarter note (C), and a dotted half note (D). The left hand has a quarter note (F), a quarter note (G), and a dotted half note (C). A *Red.* (Reduction) marking is present at the end of the measure. The text *a tempo* is written below the left hand staff.

PREVIEW