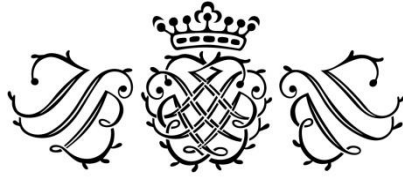


Johann Sebastian Bach



14

Preludes and Fugues

For Piano

Rewritten and elaborated
from
Johann Sebastian Bach's organ compositions.

Rome, 2019

BOOK 2

School of Music of the Roman Baroque Academy



Johann Sebastian Bach



Preludes and Fugues

BOOK 2

	Title	BWV	Year	Pag.
1	Prelude and Fugue in C major	531	1704/04?	3
2	Prelude and Fugue in D major	532	1710	11
3	Prelude and Fugue in E minor	533	1704/05?	24
4	Prelude and Fugue in F minor	534	1710	28
5	Prelude and Fugue in G major	541	1712	38
6	Prelude and Fugue in A minor	543	1714/15	48
7	Prelude and Fugue in C minor	546	1724	60
8	Prelude and Fugue in C major	547	1728	73
9	Prelude and Fugue in C minor	549	1723	82
10	Prelude and Fugue in A minor	551	1707	88
11	Prelude and Fugue in E flat - St. Anne	552	1724	94
12	Prelude and Fugue in B minor	869	1722	111
13	Prelude and Fugue in D major	874	1740	118
14	Prelude and Fugue in D sharp minor	877	1740	125



Prelude and Fugue in C major

BWV 531

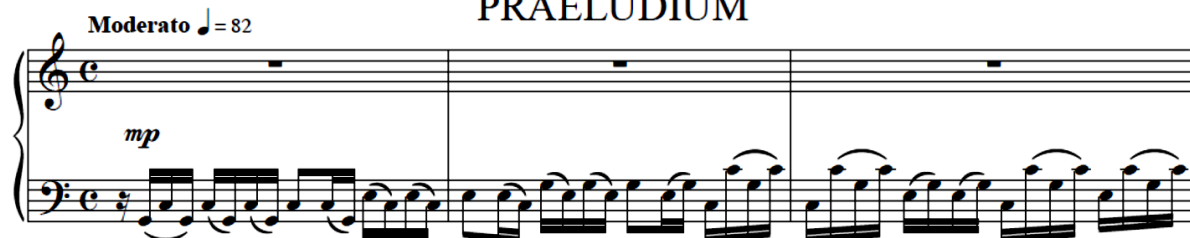
PIANO

1.

Composed for organ between 1704 and 1705
by Johann Sebastian Bach

PRAELUDIUM

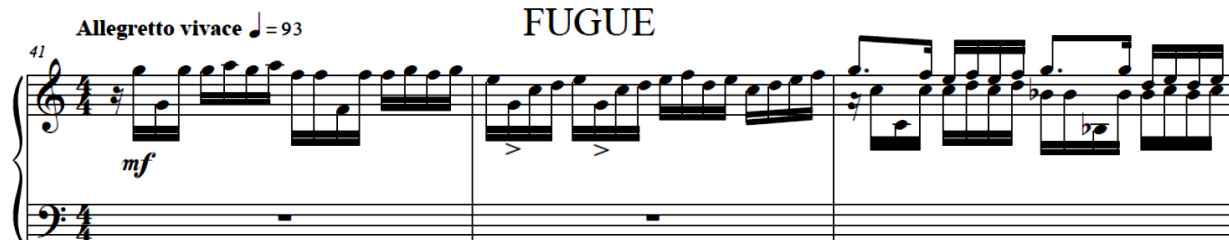
Moderato ♩ = 82



mp

FUGUE

Allegretto vivace ♩ = 93



mf

Prelude and Fugue in D major

BWV 532

PIANO

2.

Composed for organ presumably in 1710
by Johann Sebastian Bach

PRAELUDIUM

Allegretto moderato ♩ = 90



mp

FUGUE

Allegro non molto ♩ = 105



p *cresc.*

Prelude and Fugue in E minor

BWV 533

3.

PIANO

Composed for organ between 1704 and 1705

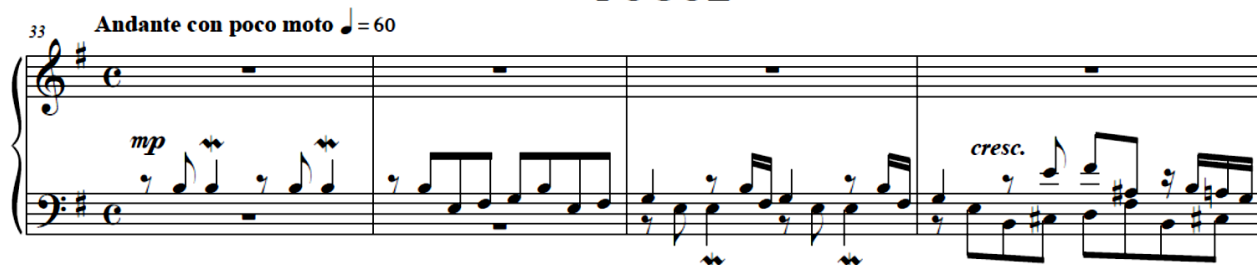
by Johann Sebastian Bach

Poco allegro ♩ = 100

PRAELUDIUM



FUGUE



Prelude and Fugue in F minor

BWV 534

4.

PIANO

Composed for organ around 1710

by Johann Sebastian Bach

Andante ♩ = 72

PRAELUDIUM



FUGUE



Prelude and Fugue in G major

BWV 541

PIANO

5.

Composed for organ around 1712 by Johann Sebastian Bach
and revised in 1724 by the same author

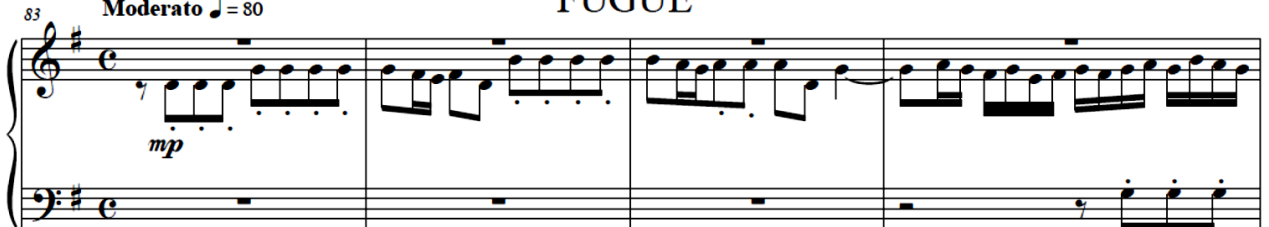
PRAELUDIUM

Vivace ♩ = 80



FUGUE

Moderato ♩ = 80



Prelude and Fugue in A minor

BWV 543

PIANO

6.

Composed for organ by Johann Sebastian Bach between 1714 and 1715

PRAELUDIUM

Andante moderato ♩ = 65



FUGUE

Andante con moto ♩ = 46



Prelude and Fugue in C minor

BWV 546

PIANO

7.

Composed for organ around 1724 by Johann Sebastian Bach

PRAELUDIUM

Maestoso $\text{♩} = 48$

The musical score for the Prelude of BWV 546 in C minor is written for piano. It features a 3/2 time signature and a key signature of three flats (B-flat, E-flat, A-flat). The tempo is marked 'Maestoso' with a quarter note equal to 48 beats. The dynamics range from *f* (forte) to *mp* (mezzo-piano). The piece consists of 145 measures, with the first measure marked with a fermata. The score is written for a grand staff with a treble and bass clef. The bass line is particularly prominent, featuring a series of descending and ascending eighth notes.

FUGUE

Allegro moderato $\text{♩} = 64$

The musical score for the Fugue of BWV 546 in C minor is written for piano. It features a 3/2 time signature and a key signature of three flats (B-flat, E-flat, A-flat). The tempo is marked 'Allegro moderato' with a quarter note equal to 64 beats. The dynamics range from *mp* (mezzo-piano) to *f* (forte). The piece consists of 145 measures, with the first measure marked with a fermata. The score is written for a grand staff with a treble and bass clef. The fugue is characterized by its complex, interlocking melodic lines and a strong sense of rhythmic drive.

Prelude and Fugue in C major

BWV 547

PIANO

8.

Composed for organ around 1728 by Johann Sebastian Bach

PRAELUDIUM

Andante un pò Allegretto $\text{♩} = 66$

The musical score for the Prelude of BWV 547 in C major is written for piano. It features a 3/8 time signature and a key signature of no sharps or flats. The tempo is marked 'Andante un pò Allegretto' with a quarter note equal to 66 beats. The dynamics range from *mp* (mezzo-piano) to *f* (forte). The piece consists of 89 measures, with the first measure marked with a fermata. The score is written for a grand staff with a treble and bass clef. The prelude is characterized by its simple, elegant melody and a strong sense of rhythmic drive.

FUGUE

Moderato $\text{♩} = 34$

The musical score for the Fugue of BWV 547 in C major is written for piano. It features a 3/8 time signature and a key signature of no sharps or flats. The tempo is marked 'Moderato' with a quarter note equal to 34 beats. The dynamics range from *mp* (mezzo-piano) to *f* (forte). The piece consists of 89 measures, with the first measure marked with a fermata. The score is written for a grand staff with a treble and bass clef. The fugue is characterized by its complex, interlocking melodic lines and a strong sense of rhythmic drive.

Prelude and Fugue in C minor

BWV 549

PIANO

9.

Composed for organ around 1723 by Johann Sebastian Bach

PRAELUDIUM

Andante maestoso ♩ = 75
(Non tanto lento)

Musical score for the Prelude of BWV 549 in C minor. The score is in 4/4 time and consists of three measures. The first measure starts with a mezzo-forte (mf) dynamic. The second measure continues the melodic line. The third measure ends with a mezzo-piano (mp) dynamic. The melody is in the right hand, and the bass line is in the left hand.

FUGUE

Allegretto non molto ♩ = 100

Musical score for the Fugue of BWV 549 in C minor. The score is in 4/4 time and consists of three measures. The first measure starts with a mezzo-piano (mp) dynamic. The second measure continues the melodic line. The third measure ends with a mezzo-piano (mp) dynamic. The melody is in the right hand, and the bass line is in the left hand.

Prelude and Fugue in A minor

BWV 551

PIANO

10.

Composed for organ around 1707 by Johann Sebastian Bach

PRAELUDIUM

Allegro non molto ♩ = 110

Musical score for the Prelude of BWV 551 in A minor. The score is in 4/4 time and consists of three measures. The first measure starts with a mezzo-forte (mf) dynamic. The second measure continues the melodic line. The third measure ends with a piano (p) dynamic. The melody is in the right hand, and the bass line is in the left hand.

FUGUE

Con moto ♩ = 80

Musical score for the Fugue of BWV 551 in A minor. The score is in 4/4 time and consists of three measures. The first measure starts with a mezzo-forte (mf) dynamic. The second measure continues the melodic line. The third measure ends with a mezzo-forte (mf) dynamic. The melody is in the right hand, and the bass line is in the left hand.

Prelude and Fugue in E flat major

"St. Anne"

BWV 552

PIANO

11.

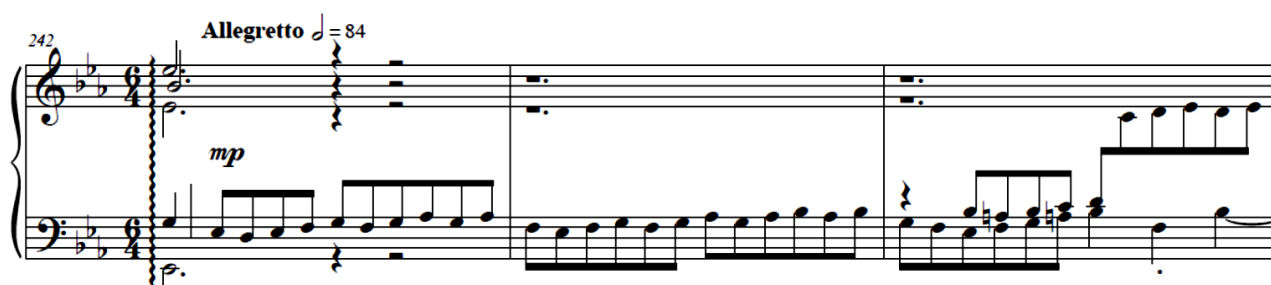
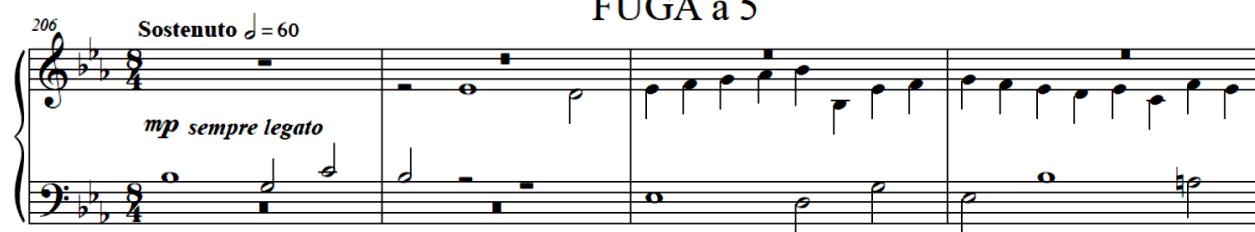
Composed for organ around 1724 by Johann Sebastian Bach

Moderato maestoso $\text{♩} = 50$

PRAELUDIUM



FUGA a 5



Prelude and Fugue in B minor

12.

BWV 869

PIANO

"The Well Tempered Clavier - Book I. No.24"

Composed between 1722 by Johann Sebastian Bach

PRAELUDIUM

Andante $\text{♩} = 80$

pp e sempre legato *cresc.* *dim.* *pp*

FUGUE

48 Largo $\text{♩} = 94$

p espressivo

Prelude and Fugue in D major

13.

BWV 874

PIANO

"The Well Tempered Clavier - Book II. No.5"

Composed in 1740 by Johann Sebastian Bach

PRAELUDIUM

Allegretto vivace $\text{♩} = 102$

mf *p* *mf*

FUGUE

58 Andante con moto $\text{♩} = 80$

p *legato* *cresc.*

Prelude and Fugue in D sharp minor

BWV 877

"The Well Tempered Clavier - Book II. No.8"

14.

PIANO

Composed in 1740 by Johann Sebastian Bach

PRAELUDIUM

Allegretto moderato ♩ = 92

The musical score for the Prelude is written for piano in D sharp minor (three sharps: F#, C#, G#) and common time. It consists of two staves, treble and bass. The tempo is marked 'Allegretto moderato' with a quarter note equal to 92 beats. The piece begins with a treble staff melody starting on D5, marked *mf* (mezzo-forte), followed by a *dim.* (diminuendo) section. The bass staff provides a harmonic accompaniment with eighth notes. The piece concludes with a *p* (piano) section in the treble staff.

FUGUE

Andante serio ed espressivo ♩ = 56

The musical score for the Fugue is written for piano in D sharp minor (three sharps: F#, C#, G#) and common time. It begins at measure 37. The tempo is marked 'Andante serio ed espressivo' with a quarter note equal to 56 beats. The piece features a single melodic line in the treble staff, marked *p* (piano), with a long, expressive phrase. The bass staff remains silent for the first two measures shown, then enters with a supporting line in the third measure, also marked *p*.