

Domenico Scarlatti

# SONATE K. 466



FÜR KLAVIER

# Sonate K. 466

<b>MUSIK</b>	Domenico Scarlatti
<b>GENRE</b>	Klassik, Barockmusik
<b>BESETZUNG</b>	Klavier

---

Das unerlaubte Kopieren von Musik ist gesetzlich verboten  
und kann straf- oder zivilrechtlich verfolgt werden.

Alle Rechte vorbehalten  
© 2022 Classicato

Veröffentlicht

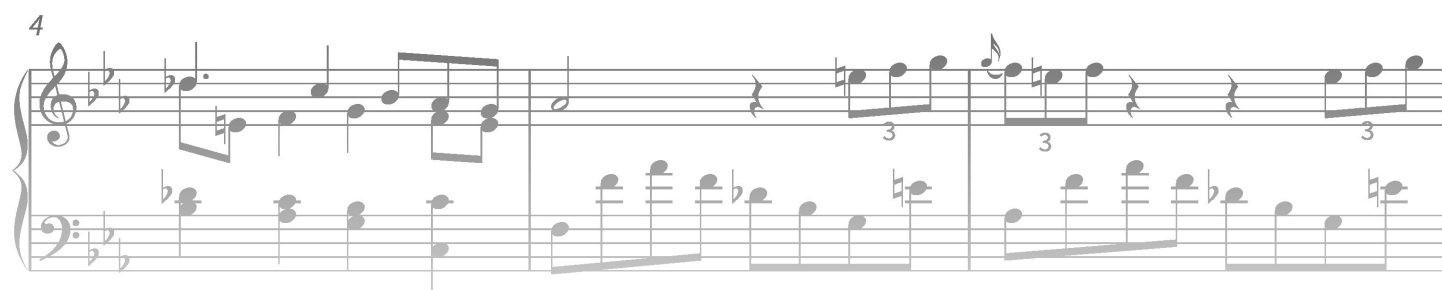
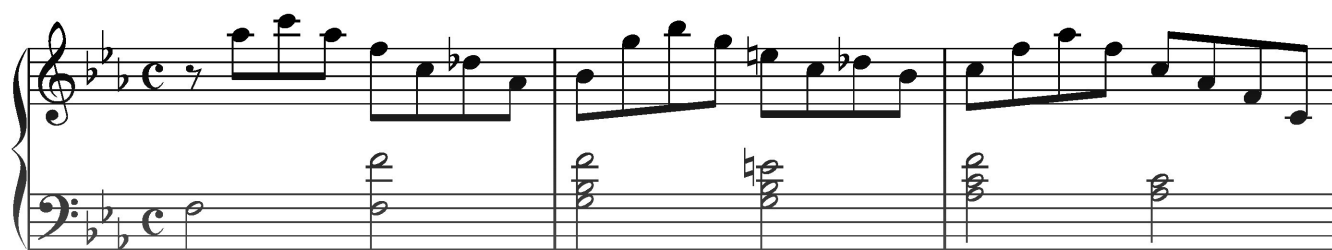
**Classicato**  
Hamburger Str. 180  
22083 Hamburg  
Deutschland

Transkription durch Soundnotation  
[www.soundnotation.com](http://www.soundnotation.com)

# Sonate K. 466

Musik: Domenico Scarlatti

**Andante moderato**



# PREVIEW



13

Measures 13-16 of Sonata K. 466. The key signature is B-flat major (two flats). The time signature is 3/4. The notation is in grand staff (treble and bass clefs). Measures 13 and 14 feature a triplet of eighth notes in the right hand and a triplet of eighth notes in the left hand. Measures 15 and 16 continue the triplet pattern in the right hand, while the left hand plays a single eighth note. The piece ends with a double bar line.

17

Measures 17-20 of Sonata K. 466. The key signature is B-flat major (two flats). The time signature is 3/4. The notation is in grand staff. Measures 17 and 18 feature a triplet of eighth notes in the right hand and a triplet of eighth notes in the left hand. Measures 19 and 20 continue the triplet pattern in the right hand, while the left hand plays a single eighth note. The piece ends with a double bar line.

21

Measures 21-24 of Sonata K. 466. The key signature is B-flat major (two flats). The time signature is 3/4. The notation is in grand staff. Measures 21 and 22 feature a triplet of eighth notes in the right hand and a triplet of eighth notes in the left hand. Measures 23 and 24 continue the triplet pattern in the right hand, while the left hand plays a single eighth note. The piece ends with a double bar line.

25

Measures 25-28 of Sonata K. 466. The key signature is B-flat major (two flats). The time signature is 3/4. The notation is in grand staff. Measures 25 and 26 feature a triplet of eighth notes in the right hand and a triplet of eighth notes in the left hand. Measures 27 and 28 continue the triplet pattern in the right hand, while the left hand plays a single eighth note. The piece ends with a double bar line.

# PREVIEW