

Wolfgang Amadeus Mozart

# EINE KLEINE NACHTMUSIK



FÜR KLAVIER

# Eine kleine Nachtmusik

*Serenade Nr. 13 - Nr. 1 Allegro*

<b>MUSIK</b>	<b>Wolfgang Amadeus Mozart</b>
<b>GENRE</b>	<b>Klassik</b>
<b>BESETZUNG</b>	<b>Klavier</b>

---

Das unerlaubte Kopieren von Musik ist gesetzlich verboten  
und kann straf- oder zivilrechtlich verfolgt werden.

Alle Rechte vorbehalten  
© 2022 Classicato

Veröffentlicht

**Classicato**  
Hamburger Str. 180  
22083 Hamburg  
Deutschland

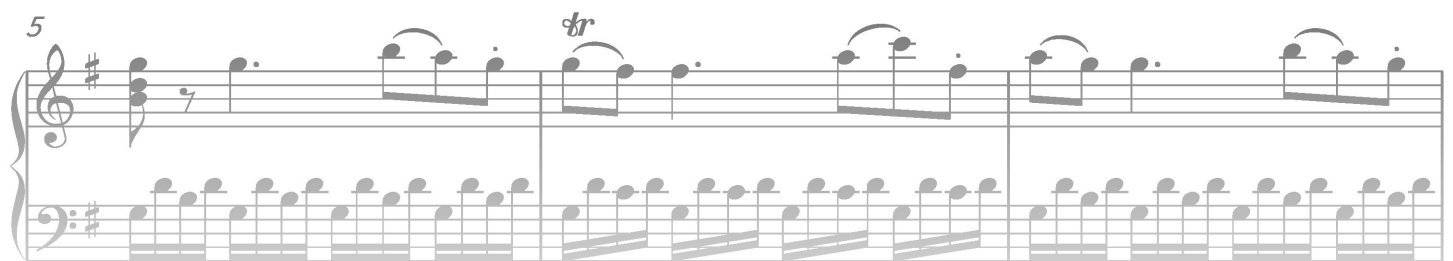
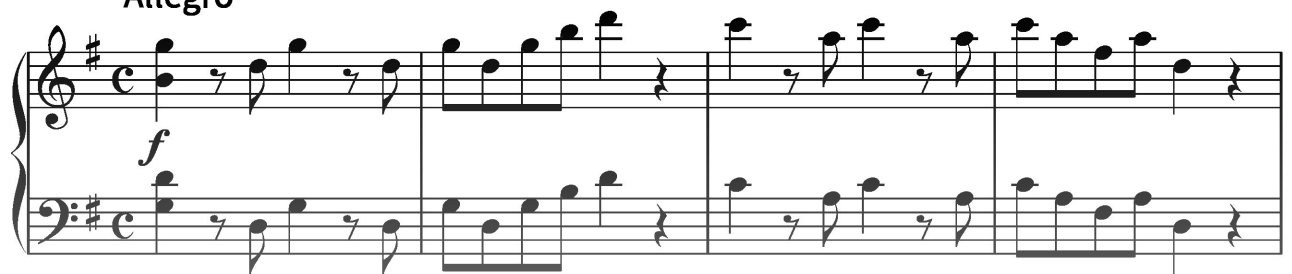
Transkription durch Soundnotation  
[www.soundnotation.com](http://www.soundnotation.com)

# Eine kleine Nachtmusik

Serenade Nr. 13 - Nr. 1 Allegro

Musik: Wolfgang Amadeus Mozart

Allegro



# PREVIEW



16

Measures 16-19 of the musical score. Measure 16 features a treble staff with a series of eighth-note chords and a bass staff with a sustained chord. Measures 17-18 show a treble staff with eighth-note runs and a bass staff with eighth-note chords. Measure 19 includes trills (tr) in the treble staff and dynamic markings *sf* and *p* in the bass staff.

20

Measures 20-22 of the musical score. Measure 20 has a treble staff with eighth-note runs and a bass staff with a steady eighth-note accompaniment, marked *cresc.* Measure 21 continues the eighth-note accompaniment. Measure 22 features a treble staff with a half-note chord and a bass staff with a forte (*f*) eighth-note accompaniment.

23

Measures 23-25 of the musical score. Measure 23 has a treble staff with a half-note chord and a bass staff with eighth-note accompaniment. Measure 24 continues the eighth-note accompaniment. Measure 25 features a treble staff with a half-note chord and a bass staff with eighth-note accompaniment.

26

Measures 26-28 of the musical score. Measure 26 has a treble staff with a half-note chord and a bass staff with eighth-note accompaniment. Measure 27 continues the eighth-note accompaniment. Measure 28 features a treble staff with a half-note chord and a bass staff with a piano (*p*) eighth-note accompaniment, marked with a triplet (3) and a fermata.

# PREVIEW