

Johann Sebastian Bach

# INVENTION NR. 13



FÜR KLAVIER

# Invention Nr. 13

*BWV 784*

<b>MUSIK</b>	Johann Sebastian Bach
<b>GENRE</b>	Klassik, Barockmusik
<b>BESETZUNG</b>	Klavier

---

Das unerlaubte Kopieren von Musik ist gesetzlich verboten  
und kann straf- oder zivilrechtlich verfolgt werden.

Alle Rechte vorbehalten  
© 2022 Classicato

Veröffentlicht

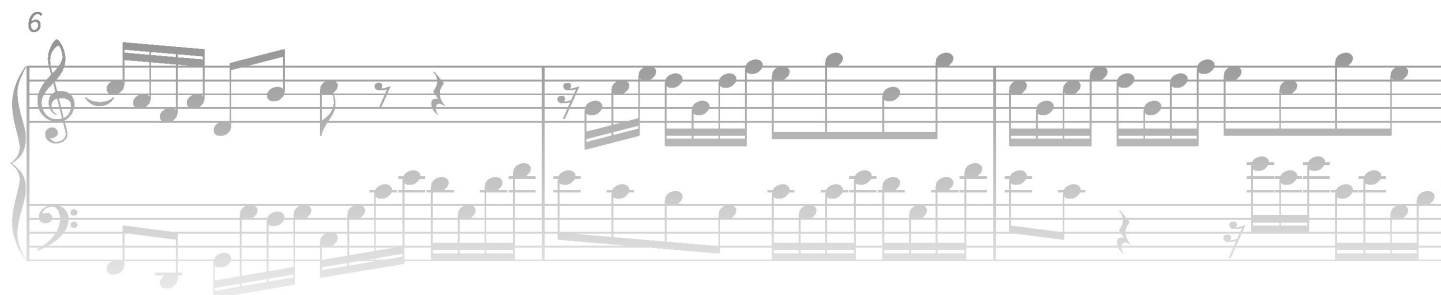
**Classicato**  
Hamburger Str. 180  
22083 Hamburg  
Deutschland

Transkription durch Soundnotation  
[www.soundnotation.com](http://www.soundnotation.com)

# Invention Nr. 13

BWV 784

Musik: Johann Sebastian Bach



# PREVIEW



13

Measures 13 and 14 of the piece. Measure 13 features a treble clef with a key signature of one sharp (F#) and a bass clef with a key signature of one flat (Bb). The melody in the treble clef consists of eighth and sixteenth notes, while the bass clef provides a steady accompaniment of eighth notes.

15

Measures 15 and 16. The treble clef continues with a melodic line, and the bass clef provides a supporting accompaniment. The key signature remains one sharp (F#) for the treble and one flat (Bb) for the bass.

17

Measures 17 and 18. The treble clef features a more active melodic line with some triplets, while the bass clef continues with a steady accompaniment. The key signature remains one sharp (F#) for the treble and one flat (Bb) for the bass.

19

Measures 19 and 20. The treble clef continues with a melodic line, and the bass clef provides a supporting accompaniment. The key signature remains one sharp (F#) for the treble and one flat (Bb) for the bass.

21

PREVIEW