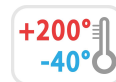


PEPFZE13- R12,5



C10



16

GALVANISED STEEL THREADED STEM TYPE A - WITH JOINT 12,5 AND HEXAGONAL BASE 13 - OBTAINED BY COLD MOULDING

Threaded stems

Materials:

Steel with strength class 4.8.

Surface finish:

Smooth.

Colour:

Blue galvanising.

Thread:

Moulded stem with hexagonal base (type A) with rolled thread (thread tolerance 6g).

Special requests:

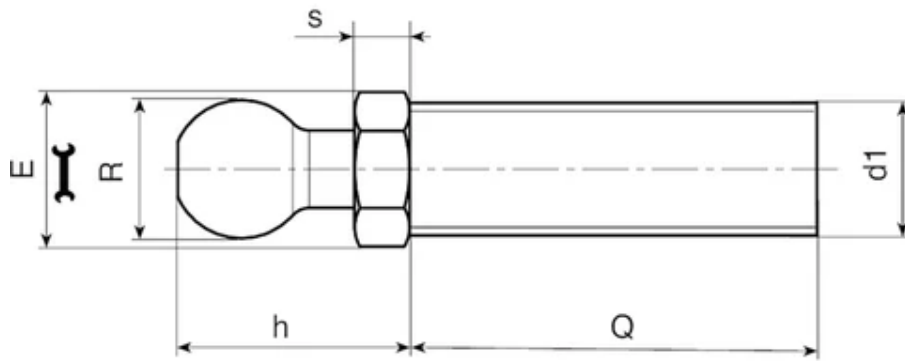
Upon request and for a minimum quantity of 30,000 pieces, inserts can be supplied with length to customer's drawing.

Compatibility with bases:

These stems are compatible with the following foot bases:

PIE.040S12,5 • PIE.050S12,5 • PIE.060S12,5 • PIE.080S12,5 • PIE.700080S12,5





Code	Art.	E	s	h	R ±0,1	d1 6g	Q	Weight (g)
PEP.FZE13X5M08X45	PEP.FZE13X5M08X45	13	5	20	12,5	M8	45	29
PEP.FZE13X5M08X70	PEP.FZE13X5M08X70	13	5	20	12,5	M8	70	36
PEP.FZE13X5M10X45	PEP.FZE13X5M10X45	13	5	20	12,5	M10	45	37
PEP.FZE13X5M10X70	PEP.FZE13X5M10X70	13	5	20	12,5	M10	70	49
PEP.FZE13X5M10X100	PEP.FZE13X5M10X100	13	5	20	12,5	M10	100	85
PEP.FZE13X5M12X45	PEP.FZE13X5M12X45	13	5	20	12,5	M12	45	46
PEP.FZE13X5M12X70	PEP.FZE13X5M12X70	13	5	20	12,5	M12	70	65
PEP.FZE13X5M12X100	PEP.FZE13X5M12X100	13	5	20	12,5	M12	100	85